

SPEC SHEET + MEASUREMENTS



Carhartt® Rain Defender® Paxton Heavyweight Hooded Sweatshirt. CT100615

Product photo



A heavyweight version of the classic hooded sweatshirt, this heavy-duty hoodie stands up to outdoor work in a substantial, water-repellent cotton blend.

- 13-ounce, 75/25 cotton/poly blend or 55/45 cotton/poly blend with Rain Defender durable water-repellent finish (Black, New Navy)*
- 55/45 cotton/poly blend (Carbon Heather)
- Attached jersey-lined three-piece hood with drawcord closure
- Front hand warmer pocket with hidden security pocket inside
- Stretchable, spandex-reinforced, rib knit cuffs and waistband
- Carhartt label sewn on hand warmer pocket
- Loose fit

**Please note: Select colors in Carhartt fleece are currently transitioning from a 75/25 cotton/poly blend to a 55/45 cotton/poly blend. Weight and fabric properties remain the same. Your order may contain a combination of both fabrics.*

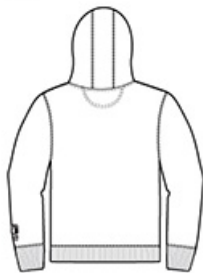
CARE INSTRUCTIONS

Machine wash cold with like colors, Do not bleach, Tumble dry low remove promptly.

Sketches



front



back

SPEC SHEET + MEASUREMENTS



Carhartt® Rain Defender® Paxton Heavyweight Hooded Sweatshirt. CT100615

PRODUCT MEASUREMENTS

	S	M	L	XL	2XL	3XL	4XL
Body Length at Back	28	29	29	30	30	31	31
Chest	22 1/2	24 1/2	26 1/2	28 1/2	30 1/2	32 1/2	34 1/2
Sleeve Length from Center Back	35 7/8	36 5/8	37 3/8	38 1/8	38 7/8	39 3/8	39 7/8

Body Length at Back: Measured from high point shoulder to finished hem at back.

Chest: Measured across the chest one inch below armhole when laid flat.

Sleeve Length from Center Back: Measure from Center Back neck to shoulder point to sleeve hem.

SIZE CHARTS

	S	M	L	XL	2XL	3XL	4XL
Chest	34-36	38-40	42-44	46-48	50-52	54-56	58-60

SPEC SHEET + MEASUREMENTS



Carhartt® Rain Defender® Paxton Heavyweight Hooded
Sweatshirt. CT100615

HOW TO MEASURE



CHEST

Measure under the arm and
around the fullest part of the chest
with arms down, keeping tape
horizontal.

COLORS



Black
PMS BLACK
C



Carbon
Heather
PMS 7540C

ForestryGn



New Navy
PMS 533C